

**Compact plant
KSF-K**

**Request for
Quote**



Specialized in environment
Technology since **1970**

Functionality of the Compact plant KSF-K:

The waste water is pumped or flows freely into the flume of the screen, where it is cleaned. The screenings are discharged, de-watered and compacted. In this process, the water flows through the screen, while coarse material is retained. The screen unit is resistant to wear from grit and stones.

FSM's proven machine components are used for the screen and the compactor.

The aerated grit chamber is designed in accordance with DWA-Standards in respect of separation of mineral superfines.

The complete length the grit chamber is provided with large bubble aeration.

The separated grit collects on the bottom of the tank. The grit is conveyed to a grit pump or a grit classifier by a spiral conveyor. The grease trap is located parallel to the grit separator, separated from this by lamellas.

Floating grease collects in the grease trap and is directed into a hopper by a scraper.

A pump removes the grease discontinuously from the hopper. The installation is provided with an emergency by-pass of the screen. A by-pass for the complete plant can be installed optionally.

Advantages:

- Optimum grit separation designed to DWA standards
- High reliability through robust construction
- Proven machine design
- Screen and grit separator can be separate or integrated items
- Integrated emergency bypass
- Application as septage reception station possible
- Can be supplied for throughputs of 5 – 200 l/s
- Excellent performance/price ratio
- Low maintenance costs
- Machine completely hygienically encapsulated

The FSM compact unit type KSF-K offers high efficiency with a very small space requirement. Type KSF-K is designed for flow rates of 5 l/s and above.

In combination with an upstream FSM screening unit, we provide an optimum installation for mechanical pre-treatment of waste water from one source.

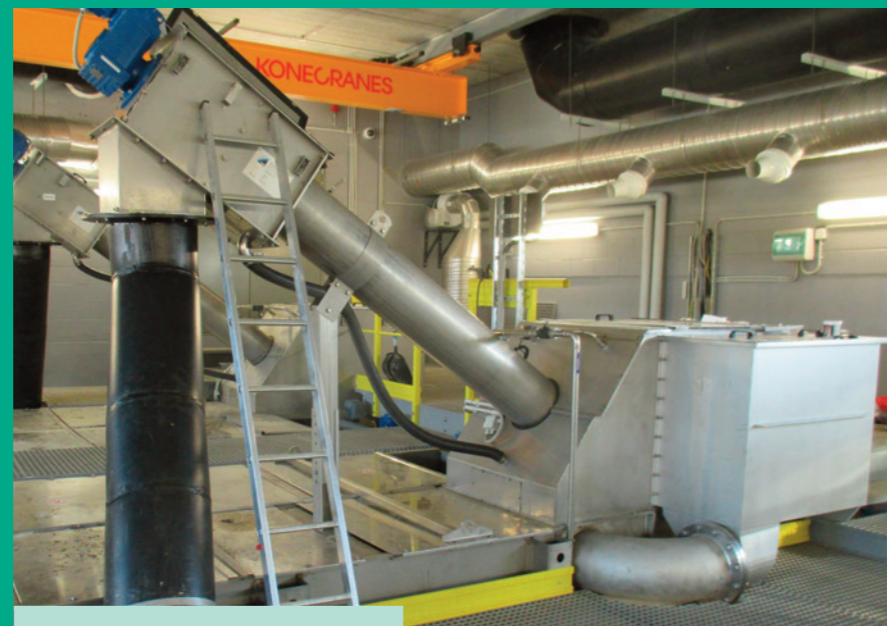
Applications in municipal and industrial clarification plant

- waste water pretreatment / fine screening
- septage reception and treatment



Industrial applications

- meat, fish and poultry processing / slaughterhouses – pretreatment of total waste water
- composting installations, waste product and disposal engineering, seepage water treatment
- fruit and vegetable processing – pretreatment of total waste water
- fruit and vegetables – pretreatment of total waste water
- breweries – pretreatment of total waste water
- animal processing industry – pretreatment of total waste water



Compact plant KSF-K

Dimensions: (Throughput 5 - 200 l/s)

Area Throughput	Grit chamber area with screen (LxW)	Total area
20 l/s	4.300 x 1.320 mm	5,68 m ²
50 l/s	8.050 x 1.320 mm	10,63 m ²
100 l/s	11.050 x 1.800 mm	19,89 m ²
140 l/s	15.550 x 1.800 mm	27,99 m ²
200 l/s	22.300 x 1.800 mm	40,14 m ²

Material/make:

tank and cover	stainless steel SS304 or SS316, other materials on request
screw / spiral	stainless steel SS304 or SS316, other materials on request
wear liner	HDPE
drives	Geared motors, make SEW

Machines for water and waste water treatment

Excellent innovative capacity combined with many years of experience and a highly motivated team providing advice, assembly and service are your guarantee of outstanding products "Made in Germany", expert contract management through to commissioning and, of course, thereafter.

Get to know us, perhaps in the near future at a Trade Fair in your locality.

